



**AMB PROPERTY CORPORATION**  
Local partner to global trade.™

FOR SALE



## Adelanto Gateway Logistics Center

Finished Lots Up to 120 Acres | Buildings Up to 2.4 Million SF

**SEC Air Expressway & Adelanto Road**

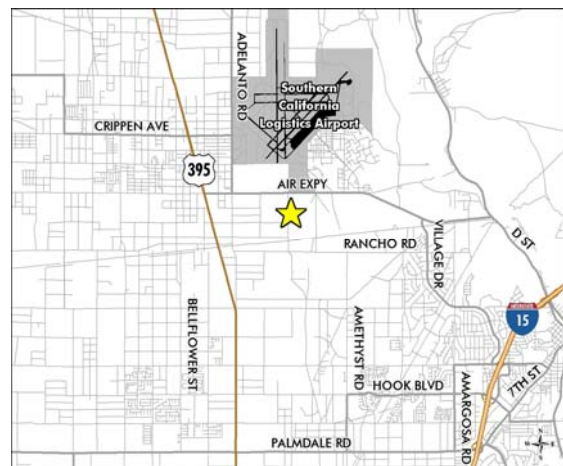
**Adelanto, CA 92301**

[www.adelantogateway.com](http://www.adelantogateway.com)

### Site Features:

- Adjacent to the Southern California Logistics Airport (SCLA) in Victorville, CA and the ±3,500 acre proposed BNSF intermodal rail complex.
- Project totals up to ±7 million square feet of future industrial warehouse space.
- Build to suit opportunities up to ±2.4 million square feet.
- Fully entitled finished lots up to ±120 acres with site infrastructure and utilities in place.
- Located approximately 5 miles west of Interstate 15, 35 miles north of Ontario Intl. Airport and 100 miles from the World Ports of Long Beach and Los Angeles.

### Locator Map



*For additional information, please contact:*

**Jay Dick**

Senior Vice President  
Direct: 909.418.2149  
Fax: 909.418.2100  
[jay.dick@cbre.com](mailto:jay.dick@cbre.com)

**Brian Barasch**

IEN Specialist  
Direct: 909.418.2021  
Fax: 909.418.2100  
[brian.barasch@cbre.com](mailto:brian.barasch@cbre.com)

**John McKeown**

President  
Direct: 562-493-8228  
Fax: 562-493-8230  
[jmckeown@cbcworldwide.com](mailto:jmckeown@cbcworldwide.com)

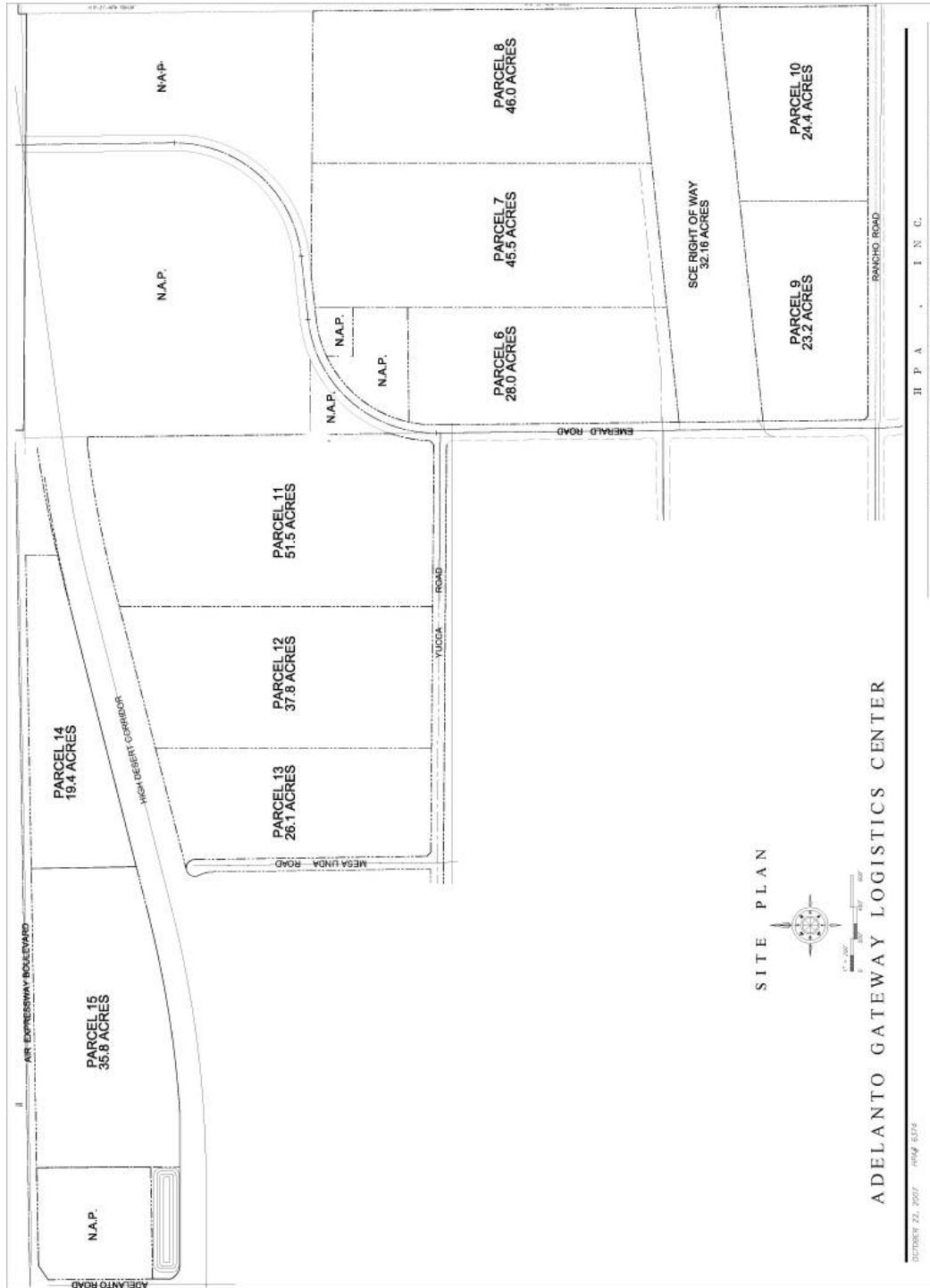
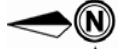
**Jonathan Wickwire**

Sr. Associate  
Direct: 562-304-1532  
Fax: 562-493-8230  
[jwickwire@cbcworldwide.com](mailto:jwickwire@cbcworldwide.com)





## Finished Lot Site Plan



NO WARRANTIES OR REPRESENTATIONS, EXPRESSED OR IMPLIED, ARE MADE AS TO THE ACCURACY OR COMPLETENESS OF THE INFORMATION CONTAINED HEREIN AND SAME IS SUBMITTED SUBJECT TO ERRORS, OMISSIONS, RENTAL OR OTHER CONDITIONS, WITHDRAWAL WITHOUT NOTICE, AND TO ANY SPECIAL LISTING CONDITIONS IMPOSED BY OUR PRINCIPALS. ALL SIZES ARE APPROXIMATE. AMB MAKES NO COMMITMENT TO UPDATE THE INFORMATION CONTAINED HEREIN, AND MAY MAKE CHANGES TO THESE MATERIALS AT ANY TIME WITHOUT NOTICE. IN NO EVENT SHALL AMB OR ITS AFFILIATES BE LIABLE FOR ANY DAMAGES WHATSOEVER (INCLUDING, WITHOUT LIMITATION, DAMAGES FOR LOSS OF PROFITS, BUSINESS INTERRUPTION, OR LOSS OF OPPORTUNITY) ARISING OUT OF THE USE OF THE INFORMATION CONTAINED HEREIN.